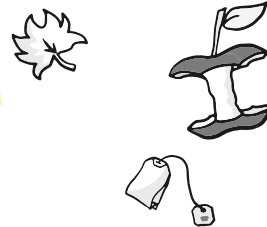


THE ORGANIC WASTE BIN IS FOR

**all biodegradable waste from the kitchen,
for example leftover or spoiled food.**

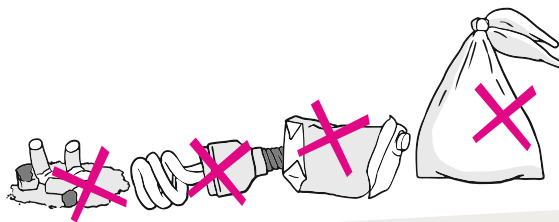
- ✓ Fruit and vegetable peelings
 - ✓ Cooked and raw foods
 - ✓ Fish and meat leftovers
 - ✓ Food scraps
 - ✓ Teabags, coffee grinds and coffee filters
 - ✓ Nut- and eggshells
 - ✓ Dairy products (not liquid)
 - ✓ Grass cuttings, clippings, twigs, weeds
- To collect moist organic waste:**
- ✓ Paper towels, paper bags
 - ✓ Newspaper



THE ORGANIC WASTE BIN IS NOT FOR

**any waste that is of non-biological origin,
for example plastic, glass, metal or paper.**

- ✗ Plastic, plastic bags
- ✗ Glass
- ✗ Metal
- ✗ Packagings
- ✗ Leather and clothing
- ✗ Diapers
- ✗ Vacuum cleaner bags
- ✗ Cat droppings,
other animal droppings
- ✗ Medication
- ✗ Paper, cardboard and magazines
- ✗ Remnants of tobacco, e.g. ash
- ✗ Wood products and wood wool
- ✗ Rocks and bricks (from the garden)



Organic waste is turned into organic compost and CO₂-neutral bioenergy.
Collect organic waste and make your contribution to climate protection.
More on the topic at [wirfuerbio.de/was-darf-rein](https://www.wirfuerbio.de/was-darf-rein)

#WIRFUERBIO



Take part and be #wirfuerbio.
Cut out and hang near your trash can.